

Lincoln Library



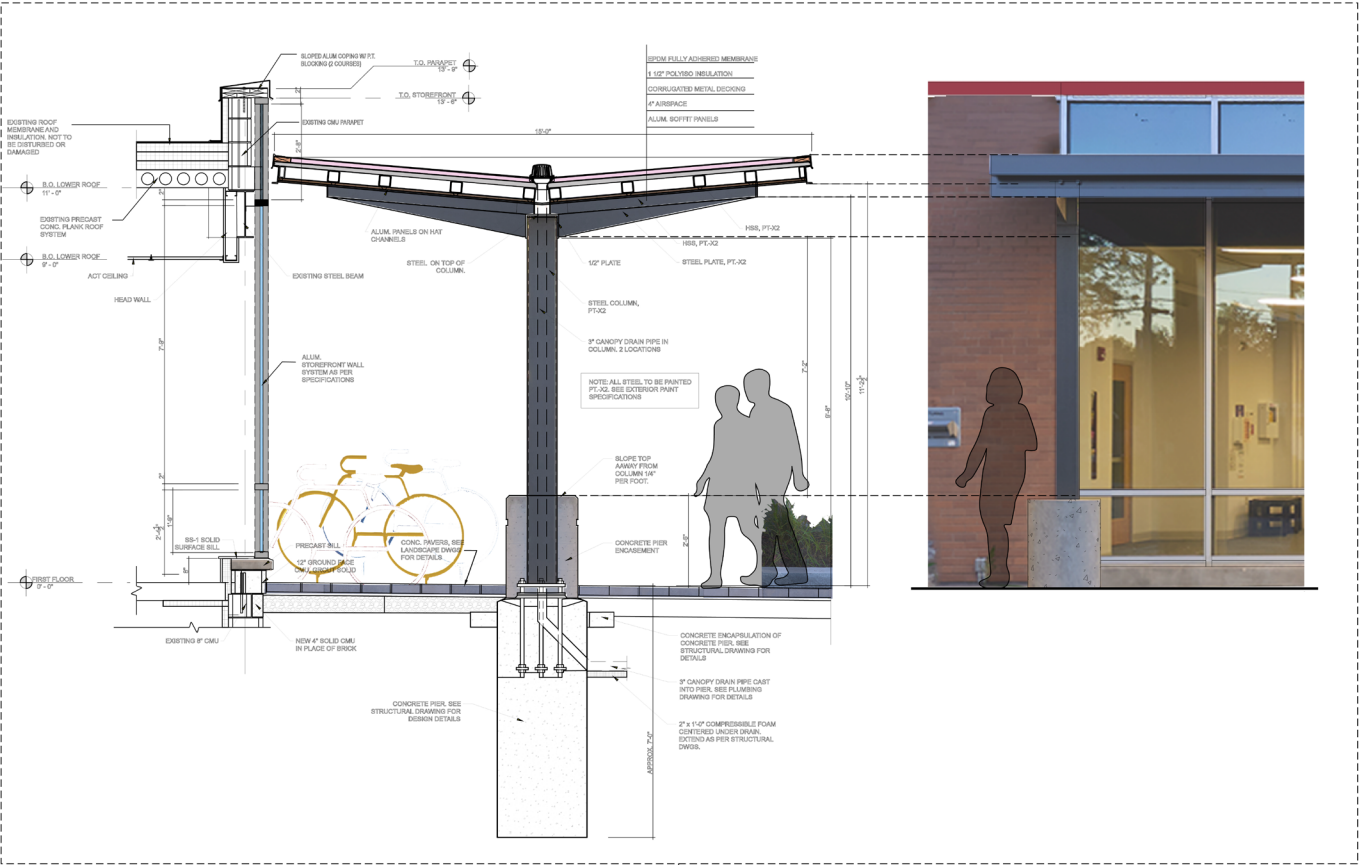


# SITE PLAN

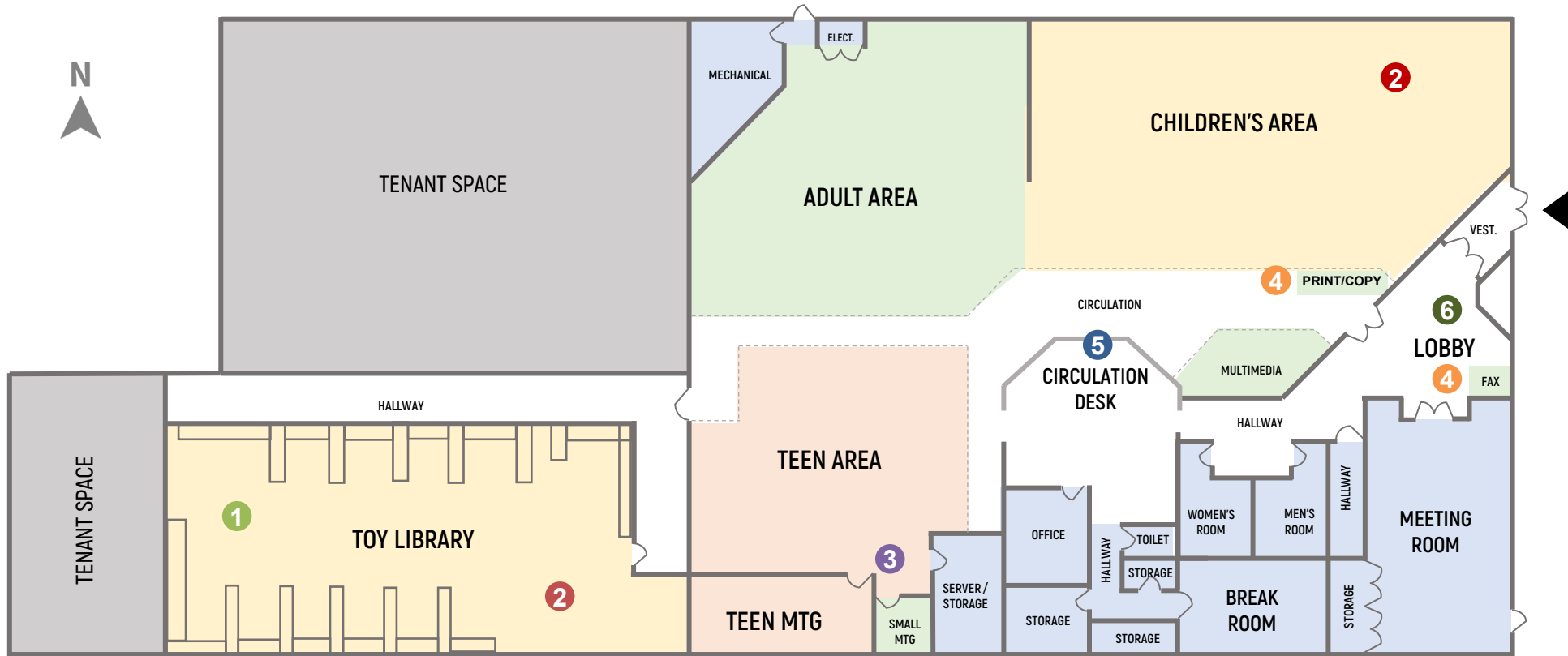


# EXTERIOR ELEVATION AND SECTION

Use of canopy to create a welcoming, community space.



# LIBRARY FLOOR PLAN: BEFORE

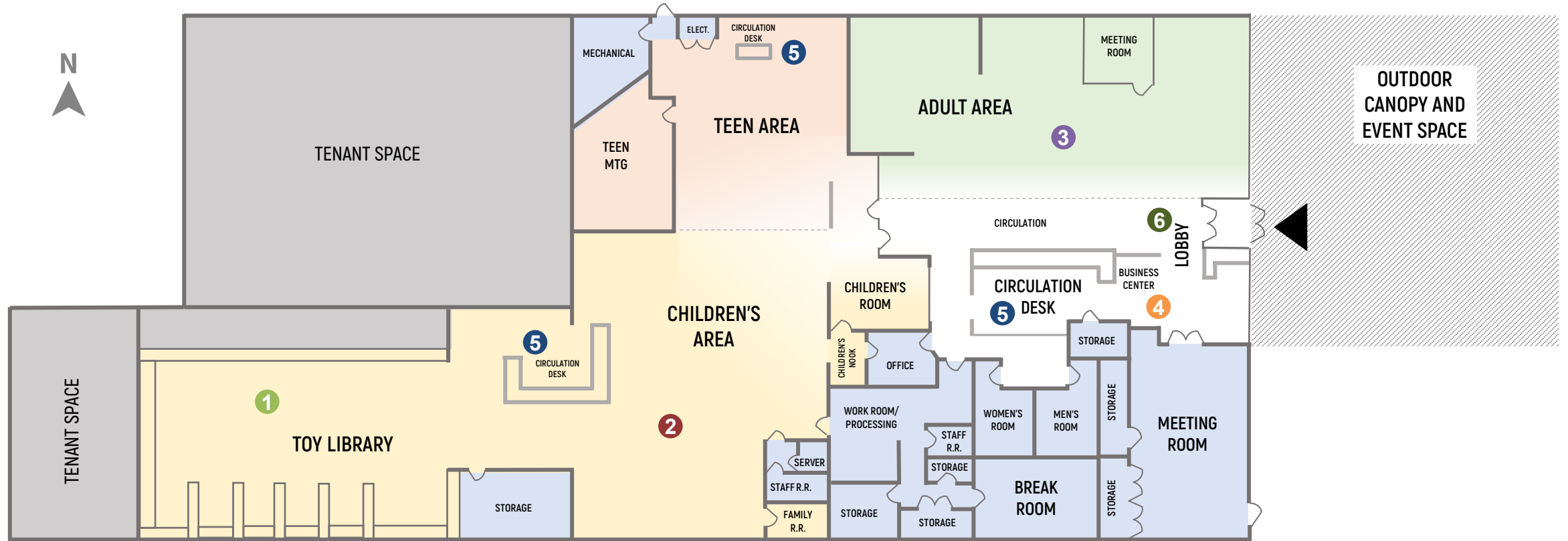


- 1 Toy library was closed off from the rest of the library with limited hours of operation.
- 2 Children's area was far from the toy library. Children had to pass through adult and teen areas to get to the toys.
- 3 Meeting room mostly used by support services was buried in the Teen Area.

- 4 Printer/fax/copier was not convenient, away from adult area and meeting room.
- 5 Line of sight was limited, especially to the restrooms, lobby, meeting rooms, and toy library.
- 6 Entrance/Lobby was disjointed, easy for people to enter without being seen, and was not welcoming. Wayfinding was difficult.



# LIBRARY FLOOR PLAN: AFTER



- 1 Toy library was opened to the rest of the library.
- 2 Children's area was relocated next to toy library.
- 3 Adult area was relocated to the front of the library, and meeting room was relocated within adult area.
- 4 Business area was relocated to front of building for ease of use, access to staff, and adjacency to adult area.
- 5 Line of sight is maintained throughout the entire library.
- 6 Entrance/Lobby is inviting with all glass doors with a straight circulation path through the library for easier wayfinding.



# BEFORE







Lincoln Library

ADULT LITO



ibrary





Lincoln Library











**BEFORE: ENTRY**



**BEFORE: CIRCULATION DESK**





RESTROOMS

September 2022  
Library Hours  
Services

TOY JUG JETI

Books in Spanish: New, Fiction and Non-Fiction  
Libros en Español: Libros Nuevos, Ficción y No Ficción





**BEFORE: CHILDREN'S AREA**











EXPLORE  
EXPLORAR

A man in a red shirt and grey pants stands with a young girl in a pink shirt and red shorts, who is holding a book. A boy in a red shirt and pink shorts is looking at a book on a shelf. In the background, two people are sitting at a table.













## **Project Description/Narrative**

The project encompassed a renovation for the city's largest and most cherished library branch, situated in a high-need residential neighborhood characterized by a significant youth and transient population. The building, essential to the community, required repairs, and its interior layout posed challenges in meeting the diverse needs of the residents.

A full gut renovation was completed, transforming the branch library to better serve the community. Key considerations in the redesign encompassed:

- Enhanced building layout and programmatic uses.
- Dedicated spaces tailored for children, teens, and adults, featuring acoustical separation and small meeting areas within each section.
- Improved adjacencies, particularly between the children's area and toy library.
- Introduction of a new family restroom adjacent to the children's area.
- Strategic relocation of the circulation desk to enhance sight lines, traffic flow, and security.
- A neighborhood support center with visible access from the circulation desk, equipped with computer and printer facilities.
- Provision of a separate staff lounge for increased comfort and privacy.
- Overall improvement of the interior environment, including the installation of new windows for natural light, vibrant paint to brighten up spaces, and energy-efficient lighting.
- Redesigned entry and storefront to create a more inviting atmosphere and foster a stronger connection to the neighborhood.
- Celebration of community pride through the incorporation of original community artwork and a new outdoor mural.

This transformation not only addressed the structural and functional shortcomings but also accentuated the library's role as a community hub, fostering a welcoming and inclusive environment for all.



## AIA's Framework for Design Excellence

The project addresses these three Framework for Design Excellence measures:

- Design for Equitable Communities: How does this project contribute to creating a walkable, human-scaled community inside and outside the property lines?
- Design for Economy: How does the project efficiently meet the program and design challenges and provide “more with less”?
- Design for Wellness: How does the design promote the health of the occupants?

The branch library, the largest within the city public library system, serves a population exceeding 33,000 residents. Positioned in one of the city's highest-need neighborhoods, it caters to a predominantly black and Latino demographic, with a significant youth population. Safety is a paramount concern due to the neighborhood's high crime rates and drug activity in and around the library.

Previously, the library faced challenges such as limited visibility, inconvenient placement of services, a popular yet isolated toy library with restricted hours, and patron safety. The children's area, marked by dark ceilings and aging infrastructure, lacked accessibility and needed improvements. Additionally, the adult area, meeting rooms, and business services were not optimally situated.

Addressing these issues, the library underwent a transformative redesign. The toy library, once secluded, is now integrated into the main library space, enhancing visibility and monitoring. The relocation of the children's area adjacent to the toy library allows seamless movement between the two, fostering a more cohesive environment. A family restroom was introduced in the children's area. Both the children and teen areas are separated from the rest of the library with glass doors.

The adult area was repositioned to the front, featuring a new glass meeting room with enhanced visibility. The business center's strategic placement and proximity to the circulation desk facilitate staff monitoring. The implementation of help/circulation desks in key areas significantly increased line of sight within the library.

The entrance lobby underwent a substantial transformation, streamlining wayfinding and improving visibility. The exterior received a major overhaul, with prominent signage, an inviting entrance, and outdoor event space. Collaborating with the local neighborhood, a mural concept was introduced to the exterior side, further enhancing the library's aesthetic appeal.

The library's redesign addressed safety concerns, improved visibility, and created a more cohesive and accessible space for its diverse community. The integration of community input and strategic changes have transformed it into a welcoming and functional hub for residents.

From the mayor at the Library Grand Re-Opening: “We are here today to celebrate the grand re-opening of the... Branch Library, a library branch that is located in one the five poorest zip codes in New York State. A branch that is sandwiched between two other Zip Codes that are also on that list of the five poorest... We owe them a library that's more than just open and available. We owe them a library that speaks to them in their own language. Whether that's literally a foreign language like Spanish, or the universal language of our youngest learners: the language of play. We owe them a library that not only welcomes, but fully embraces all who enter. A library with programs and services that continue to evolve just as the methods of learning continue to evolve. We owe them a library and a library staff that is committed to inspiring hope and nurturing dreams.”



## **AIA Rochester Community Impact Award**

### **Community Impact Award summary** (500 words or less):

The Lincoln Branch Library, the largest within the Rochester Public Library system, serves a population exceeding 33,000 residents. Positioned in one of the city's highest-need neighborhoods, it caters to a predominantly black and Latino demographic, with a significant youth population. Safety is a paramount concern due to the neighborhood's high crime rates and drug activity in and around the library.

Previously, the library faced challenges such as limited visibility, inconvenient placement of services, a popular yet isolated toy library with restricted hours, and patron safety. The children's area, marked by dark ceilings and aging infrastructure, lacked accessibility and needed improvements. Additionally, the adult area, meeting rooms, and business services were not optimally situated.

Addressing these issues, the library underwent a transformative redesign. The toy library, once secluded, is now integrated into the main library space, enhancing visibility and monitoring. The relocation of the children's area adjacent to the toy library allows seamless movement between the two, fostering a more cohesive environment. A family restroom was introduced in the children's area. Both the children and teen areas are separated from the rest of the library with glass doors.

The adult area was repositioned to the front, featuring a new glass meeting room with enhanced visibility. The business center's strategic placement and proximity to the circulation desk facilitate staff monitoring. The implementation of help/circulation desks in key areas significantly increased line of sight within the library.

The entrance lobby underwent a substantial transformation, streamlining wayfinding and improving visibility. The exterior received a major overhaul, with prominent signage, an inviting entrance, and outdoor event space. Collaborating with the local neighborhood, a mural concept was introduced to the exterior side, further enhancing the library's aesthetic appeal.

The Lincoln Branch Library's redesign addressed safety concerns, improved visibility, and created a more cohesive and accessible space for its diverse community. The integration of community input and strategic changes have transformed it into a welcoming and functional hub for residents.

From Mayor Malik Evans at the Lincoln Library Grand Re-Opening: "We are here today to celebrate the grand re-opening of the Lincoln Branch Library, a library branch that is located in one the five poorest zip codes in New York State. A branch that is sandwiched between two other Zip Codes that are also on that list of the five poorest... We owe them a library that's more than just open and available. We owe them a library that speaks to them in their own language. Whether that's literally a foreign language like Spanish, or the universal language of our youngest learners: the language of play. We owe them a library that not only welcomes, but fully embraces all who enter. A library with programs and services that continue to evolve just as the methods of learning continue to evolve. We owe them a library and a library staff that is committed to inspiring hope and nurturing dreams."