

# LAMBERTON CONSERVATORY

Within the glass walls of Lamberton Conservatory are many plants not hardy enough to survive Rochester's temperate climate. Under the main dome of the facility is a tropical floral display. Other climate-controlled rooms contain collections of exotic tropical plants, desert plants, economic plants (such as banana and coffee trees), as well as carnivorous and house plants. Among the most popular attractions at the Conservatory are fauna and seasonal floral displays. Exhibits are changed seasonally – there is always something beautiful to see.

We were inspired by how the soft and organic feeling of the biophilic elements living in the conservatory create a contradiction with the straight lines and hard surfaces of the building's structure. Our concept is to create a fashion statement that incorporates the greenery and living features juxtaposed next to a strong structural piece. We plan to incorporate the use of upholstery, felt, wallcovering to create those softer, more delicate features and the main structure of the outfit. Glass will be incorporated in interesting and creative ways that draw interest to certain areas of the outfit. We will also flip the notion of glass being just a hard surface by shaping it into softer elements.

## MATERIALS

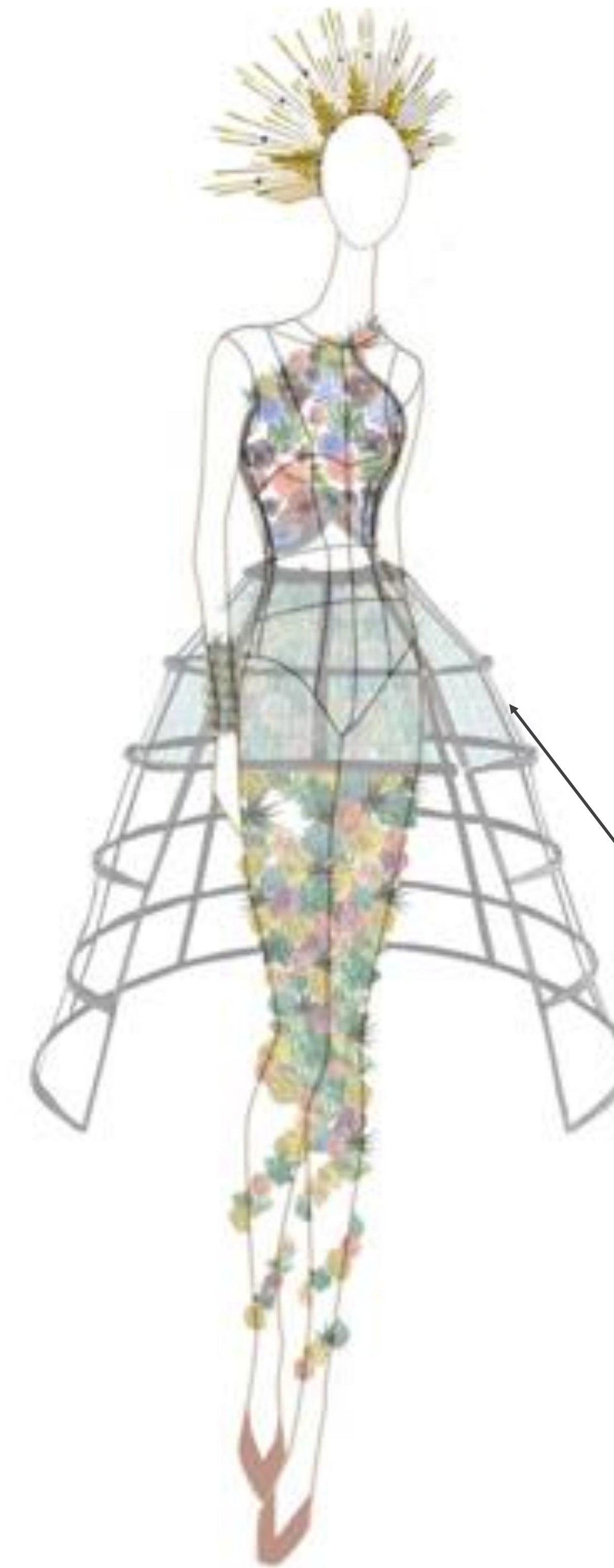
Textiles & Wallcovering



Glass Sculpture & Flowers



## CONCEPT DESIGN



30%  
Glass

50%  
Upholstery

10%  
Felt

10%  
Wallcovering

10%  
Support  
Materials



Glass slides applied to sheer fabric overlay



PRODUCT RUNWAY 2022 TEAM

**SWBR**



**GONG**  
GLASS WORKS

NANCY GONG, GLASS ARTIST

Arc | Com