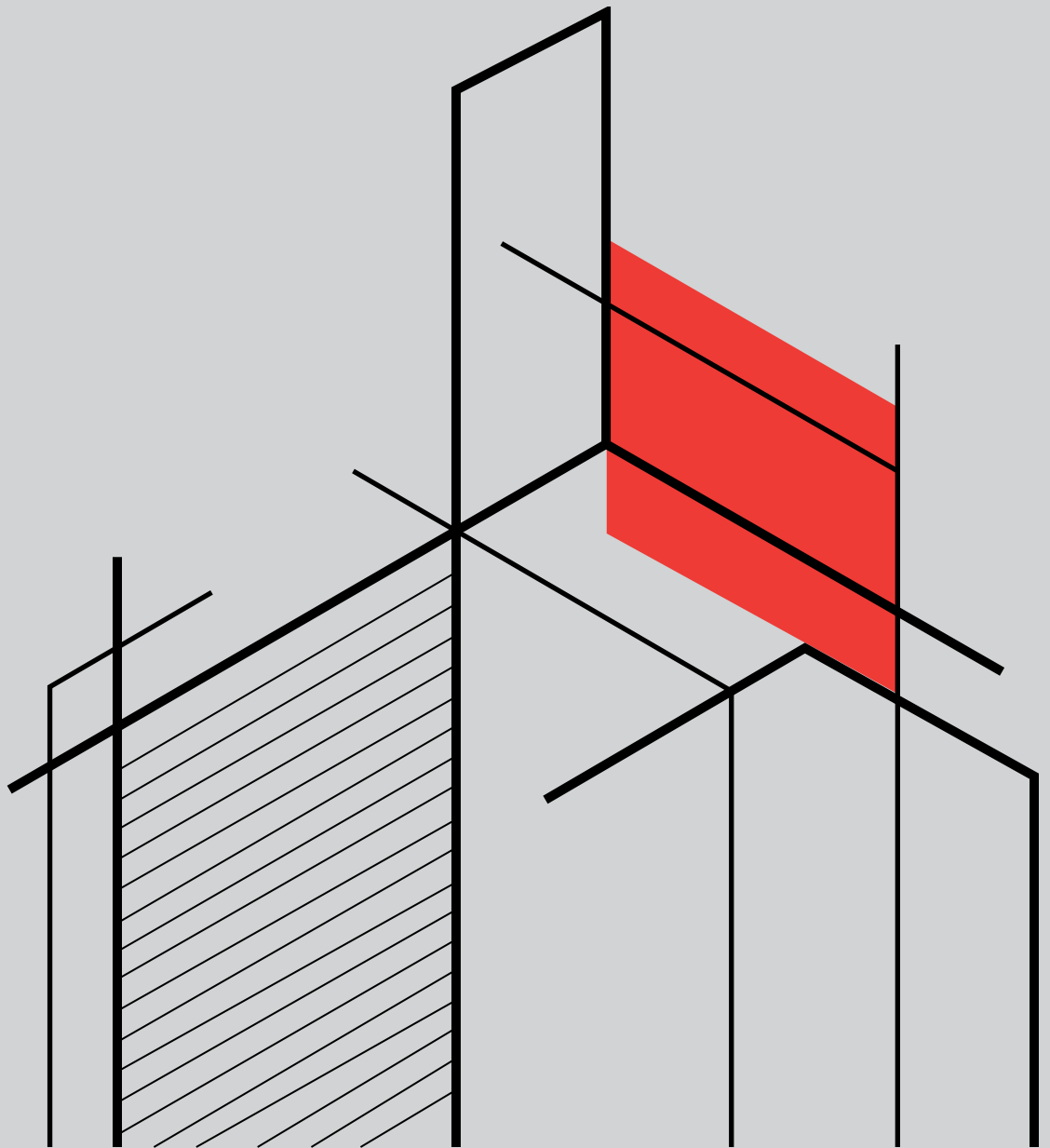


# 2024 Design Awards

---



# 2024 Design Awards Winners



**Grand Honor Award**  
Autism Nature Trail  
In.Site: Architecture



**Design Award**  
RIT Student Hall for Exploration and Development (SHED)  
MRB Group with William Rawn Associates



**Merit Award**  
Neighborhood of Play  
CJS Architects



**Citation Award**  
Lincoln Library  
Edge Architecture



**Design Award**  
buildingOUT  
In.Site: Architecture



**Community Award**  
24 Jones - Avenue Housing for Alcohol & Substance Use Rehabilitation  
Plan Architectural Studio, PC



**Merit Award**  
Clute Park Redevelopment  
Stantec Architecture Inc.



**Merit Award**  
Arbor Midtown  
Hanlon Architects

# Thank you to all of our participating firms!



**RIT School of Photographic Arts & Sciences**  
PLAN Architectural Studio, PC



**Rochester Public Market - 2022 Master Plan**  
PLAN Architectural Studio, PC



**24 Jones Avenue - Housing for Alcohol & Substance Use Rehabilitation**  
PLAN Architectural Studio, PC



**Neighborhood of Play**  
CJS Architects



**Rochester Institute of Technology - Grace Watson Hall Renovations**  
LaBella Associates, DPC



**RIT Student Hall for Exploration and Development (SHED)**  
MRB Group with William Rawn Associates



**Clute Park Redevelopment**  
Stantec Architecture



**DePaul Lock 7 Apartments**  
SWBR



**Roberts Wesleyan University Golisano Community Engagement Center**  
SWBR



**Villa of Hope - Living Hope Treatment Center**  
Stantec Architecture with PLAN Architectural Studio, PC



**Stevers Candies**  
Hanlon Architects



**Arbor Midtown**  
Hanlon Architects



**James Newbury Hotel Complex**  
SWBR



**Passive House**  
Architectura, PC



**Lincoln Library**  
Edge Architecture



**Autism Nature Trail**  
In.Site: Architecture



**buildingOUT**  
In.Site: Architecture



**Henrietta Fire Department Fire Station No. 6**  
Passero Associates



**Edna Craven Estates and Apartments**  
Passero Associates



**Chili Fire Department New Fire House**  
Passero Associates

# Grand Honor Award



## Autism Nature Trail In.Site: Architecture

### Owner

New York State Parks

### Contractor

Titan Development

### Structural Engineer

WSP Engineering

### Landscape Architect

Trowbridge Wolf Michaels

### Play Design

Earthplay

### Photography

Tim Wilkes

### Project Description

ANTidote: Nature Therapy By Design

Design doesn't stop at a building's threshold. In America's first Autism Nature Trail, it's all about thresholds. We translated autism consultants' advice into built form along this mile-long trail. Boundary, frame, marker and room aid those on the spectrum in experiencing the forest.

**Gateways.** The trail is a gateway to nature appreciation, beginning at the Trailhead Pavilion. This literal portal's familiar gable-roofed form signals welcome. Its stone, wood and steel palette anticipates the interventions to come. It may be the farthest some first-time visitors get.

**Boundaries.** Proceeding to a station is a choice. Visitors with autism can choose to cross the threshold onto the forest floor – or not.

**Frames.** Each station amplifies its place. The Sensory Station's two L-shaped pavilions bracket a forest floor peppered with nuts, cones, sticks, stones, blooms, and bones. Their sheltered shelving dynamically displays found objects, framing and echoing the irregular branching of surrounding evergreens.

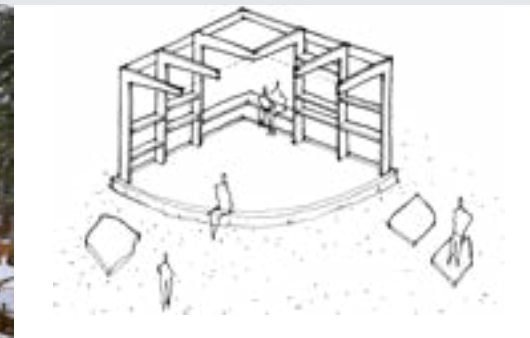
**Markers.** Stone piers describe what lies beyond each station's "exit ramp." Predictable and tactile, they echo chimney ruins elsewhere in the park.

**Rooms.** Several stations are naturally enclosed by the forest. The Reflection Knoll is a dark room of stones and branches. The Design Station – a natural maker-space – is 'roofed' by a single evergreen, the ground 'carpeted' with pine needles.

**Paths.** Those who make it this far can traverse the Playful Path. Numerous interweaving natural materials invite visitors to test textures underfoot, while a central lane lets them bypass uncomfortable surfaces.

**Portal.** The loop concludes at the Celebration Station – the other half of the iconic Trailhead Pavilion. We welcome walkers back to wait for stragglers, empty their pockets, and mark the chalkboard.

This two-way portal transitions visitors back to pavement, parking and people, with the benefit of nature therapy at their comfort level: ANT as antidote.



### Jury Comments

This is a solid project in all aspects. The narrative explains just enough that you understand and the language is wonderful. The drawings were beautiful. The project works at all levels – zoomed out has a clearly defined hierarchy of the network, and each individual pavilion has a resolution and purpose so that even if you don't complete the loop, it still makes sense. The materiality detailing how the pieces relate to each other and the trail. Each station amplifies its space. It's easy to imagine coming back here each season to experience it in a different way. Additionally, the equity the project offers to those with different abilities is commendable.

# Design Award



## RIT Student Hall for Exploration and Development (SHED) MRB Group with William Rawn Associates

**Owner**  
Rochester Institute of Technology

**Contractor**  
Welliver McGuire, Inc.

**Structural**  
LeMessurier

**MEP Engineering**  
M/E Engineering

**Landscape Architect**  
Bayer Landscape Architecture, PLLC

**Theatre/Performance**  
Theater Products

**Acoustic Design**  
Threshold Acoustics

**Photography**  
Robert Benson Photography

### Project Description

The SHED is a dynamic, 218,000 SF complex that centralizes RIT's multidisciplinary focus on creativity and innovation. It is a building with no precedent, envisioned by university leadership as a "supercollider of ideas." The building combines engineering team workspace, maker spaces, performing arts, active-style classrooms, and the main library. The building is a microcosm of RIT – where visitors can immediately understand the institution's unique blend of arts and engineering:

**Maker Studios:** Wood, Metals, Paint Shop (doubles as scene shop); Engineering Team Bays (vehicles, rockets, etc); Textiles and Electronics; Printing Press

**Performance Spaces:** Glass-Box Theater; Dance Studio; Music Studio

**Creative Library:** The renovation strengthens Wallace Library as a resource for discovery and collaboration

**Active Learning Environments:** Five 150-seat active classrooms in the SHED, twenty-two 20-36 seat classrooms in the library

**Atrium as a Pop-Up Venue:** Designed for gathering, performance, and makerspace activity.

The five main design elements of the SHED:

#### Diversity of Uses

The SHED advances creativity as an active ingredient in innovation and integrates the arts and humanities as collaborators within a STEM-dominated ecosystem.

#### Facilitating Student Participation

As a new campus gateway, the building envelops an outdoor promenade as it passes through, creating space that is half inside (the Hub) and half outside (courtyard).

#### Layered Transparency Engaging Diverse Users

The building creates an environment where everyone is both actor and audience, establishing a new paradigm for inclusive and active collaboration.

#### Bigger Than a Single Building

A 900-foot "interior street" connects the library, café, and learning center, new maker and performance Hub, and the Student Alumni Union's cafés, dining hall, and student support services.

#### Machine for Daylight

The SHED is a counterpoint to the mid-century modern campus core, inviting students to experience an environment that is lacking across campus.



### Jury Comments

The circulation and connectivity of this project are very successful both interior and exterior. The jury appreciated that the submission showed part of the design process. This building becomes the connector, knitting the campus together with something new; it's a unique solution to a difficult site. The design concept is clear and the color choices bring clarity. The red band wayfinding piece is compelling; even in the peripheral spaces you can see it in the background so you can find your way back. The central space, with the circular motion pieces, was compelling. The peripheral spaces of the project are thoughtful and well planned and compelling with a little bit of drama in each of them, with ceilings receiving a special mention. There are an abundance of enjoyable places full of light. The transparency throughout the project, with layered views inside to outside, is hard to accomplish on a building this scale.

# Design Award



## buildingOUT In.Site: Architecture

### Owner

Name withheld by request

### Contractor

Lettieri Construction

### Landscape Architect

Summerhill Landscapes

### Photography

Tim Wilkes

### Project Description

**buildingOUT:** A growing family makes room for modern living in a historic home by identifying key needs... and then kicking them out.

Over the centuries, two structurally distinct additions to the original 1688 house resulted in segmentation and squirreliness, leaving three quarters of the home rarely used.

**OUTbuildings:** Fortunately, the home sits on ten acres, with ten outbuildings that once served traditional functions. So, to make space for interconnected living inside the house, we evicted several program elements that now live, scattered, in these white-washed brick structures:

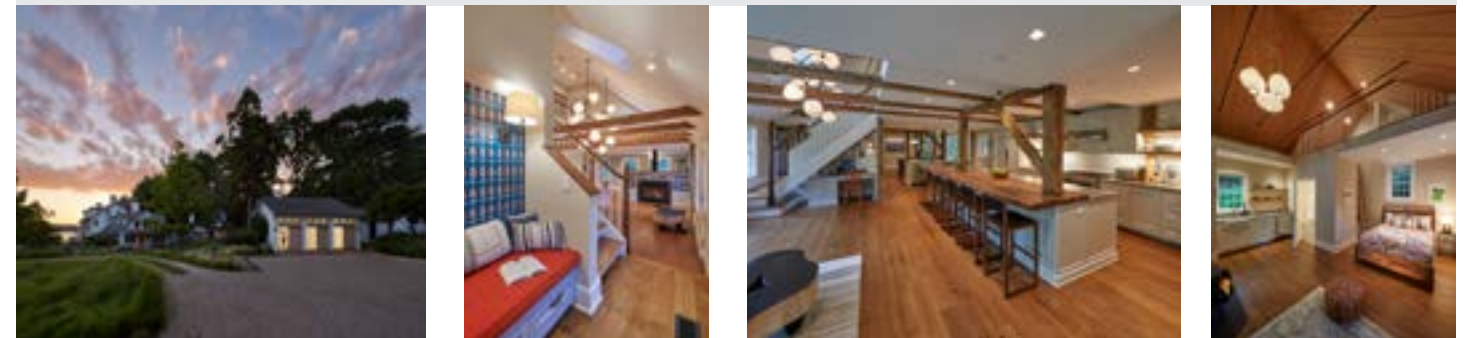
- Where the milkman once kept his delivery cool in a flooded-floor pondhouse, we created a home office.
- A small, earth-sheltered icehouse now holds exercise equipment.
- Near the kitchen door, the tiny white-washed summer cottage serves as a lofty, self-contained suite for visitors.
- Finally, the stables became a “knockbox,” an all-weather space where their five kids can let loose. Sliding barn doors conceal its purpose when not in use.

**Family CAMPUS:** The landscape knits these dispersed functions together. Lushly-planted dry creekbeds become the organizing design armature, capturing stormwater that once caused flooding. Depaving, paths, footbridges, patios and gardens link destinations, facilitating indoor-outdoor living.

**Inside→ OUT:** The out-ing of so many elements allowed us elbow room to integrate the three parts of the home. From the 17th-century wing, the kitchen flows outward in all directions:

- south to sunshine and vegetable gardens;
- north to an elevated dining patio affording harbor views;
- east to arrival;
- west into a wide-open dining and family room; and
- up, via a removed ceiling, to grab light and air from existing dormers, while stairs climb to a mezzanine linking the sleeping spaces.

Throughout, precise modern craft, material and detailing showcase 300-year old timbers, penning the next chapter on this storied property, written in sun, stone, steel, water and wood.



### Jury Comments

This is an amazing project with a great narrative. A creative reutilization of outbuildings, exposing what was already there, on a great site. The landscape design was beautiful and really knitted the spaces together. It was a strategy worth tackling and a strong, comprehensive project.

# Merit Award



## Clute Park Redevelopment Stantec Architecture Inc.

### Owner

Village of Watkins Glen

### Contractor

Welliver Construction

### Operations Planner

Ballard King & Associates

### Geotechnical & Inspections

CME Associates, Inc.

### Photography

Van Zandbergen Photography

### Project Description

The Village of Watkins Glen and Schuyler County are transforming Clute Park into a year-round destination. The program developed during the Downtown Revitalization Initiative Master Planning effort targeted improvements significantly exceeding the funding secured through four state agency grants, and private and municipal contributions. Through a collaborative process, the project team refined the program to resolve the budget without sacrificing functional and emotive goals.

Based on a holistic and integrated approach to landscape and architectural design, the design strengthens the fabric of the park and community. The design weaves elements between the community fabricated 1923 pavilion and salt extraction wells located in the park. Three new structures are composed around a flexible plaza that integrates a central 12,000 square foot patio supporting an ice-skating rink in the winter, and a 2,000 square foot spray pad in the summer.

The bathhouse, located west of the plaza, provides accessible restrooms, rinse showers, and seasonally programmed office space for lifeguards in the summer and skate rental in the winter. The events center provides space for up to 150 guests, a lake front breakout plaza looped by the park trail system, a community run cafe and generous overhangs for shade and shelter. The structures frame views of Seneca Lake and are programmable in combination throughout the year for festivals, private parties, summer movie nights, and children's summer programs. A mechanical building houses seasonal ice systems, the Zamboni, and splash pad systems while framing the composition and marking an entrance.

### Design Goals:

- Position the pavilion and bathhouse as integrated wings that protect and integrate the ice rink and splash pad experience.
- Create an internal events space and cafe with views of the iconic lake while creating nurtured views of activities on the courtyard side of the building.
- Establish a safe building that acts as cover during strong thunderstorms.
- Create an inspiring architectural and landscape design that speaks to the natural geometries and history of the site while functioning as a revenue generating facility for the village.
- Maintain the existing pavilion for future development as part of a composition along-side the new pavilion and landscape elements.



### Jury Comments

This project had a nice presentation with strong graphics that were easy to follow and logical. The site analysis diagram was particularly expressive and informative. Using the mechanical building as foreground was smart. Loved the thought process for the project; the plan layout was intriguing and the site was compelling. It's a really nice park and planning project, and they capitalized on the views. Creating a four-season building in upstate New York is a challenge. The solution feels logical and well thought out.

# Merit Award



## Arbor Midtown Hanlon Architects

**Owner**  
183 E Main St LLC | Arbor Venues

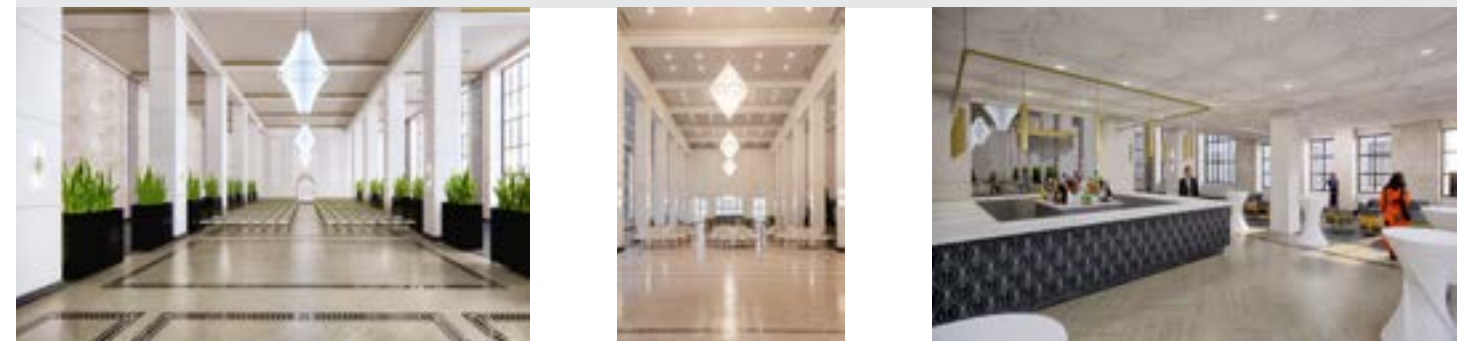
**Contractor**  
Taylor, The Builders

**Photography**  
Jessica Palaszynski

### Project Description

The renovation of the bank hall at The Linc has been long in the making. Within the second floor of the 15-story building, the elegant original two-story volume was converted into offices in the 1960s/70s, stripping it of much of the original detail. Unfortunately this space sat unused for many years. By the start of the latest iteration of this project, much of the original plaster and stone detail had been removed, leaving little to save and restore. Our involvement with this building began in 2015, with the overall renovation of the building. Since that time, the hope has been to revitalize the bank hall space, converting it to a ballroom. Unfortunately, the right tenant was not found for the space until 2022, with Arbor Venues. The assembled development team—183 East Main Street LLC (owner), Arbor Venues (tenant), Taylor, The Builders, and Hanlon Architects really allowed the space to live up to its potential. Much of the work of this project was sensitively restoring the remaining original features, while sensitively bringing the modern amenities necessary for an event venue.

Working with SHPO and the NPS as part of historic tax credit programs brought many requirements, which in the end resulted in a superior final project and design. Taylor, The Builders brought many excellent craftspersons onto the team, particularly the plaster restoration team.



### Jury Comments

They inherited a great space and kept all the important things to make it alive again. It's a lovely space, simple and clean, with subtle design. Restraint is a hard thing and they practiced it well.



# Merit Award



## Neighborhood of Play CJS Architects

### Owners

The Strong | Konar Properties | Indus Hospitality Group

### Contractors

LeChase Construction Services, LLC | Pike Construction Services

### Structural Engineers

Jensen/BRV, PLLC (Museum) | WGI (Parking Structure) | Stantec (Hotel and Residential) | Popli Design Group (Residential and Mixed-Use)

### Landscape Architect

BME Associates

### Civil Engineers

LaBella Associates | Stantec (Inner Loop)

### MEP Engineer

M/E Engineering

### Photography

Kim Smith

### Project Description

The Urban Planning and Design Project started in 2014 with the anticipated removal of the sunken expressway in Rochester, NY. The City had secured funding for the removal of the expressway and our firm was hired by a Museum to develop a masterplan for the museum's property in response to the opportunity afforded by the adjacent expressway's removal. Our resulting masterplan in 2016 proposed the creation of a new neighborhood that centered around the expanded museum. We were able to assemble a total of twelve acres for the neighborhood, including three acres from the expressway removal, seven acres of museum parking, and two acres from an adjacent city owned parcel.

The final masterplan included a 100,000 square foot museum expansion, a 1,000-car parking structure, and over six acres of new development parcels for 240 residential units, 17,000 square feet of mixed use/commercial space and a 125-room hotel. To implement the masterplan the museum partnered with private developers and turned over three acres of museum property for private development and new dedicated streets.

Our design team was retained by the development partners for all neighborhood projects. Over the next seven years all portions of the masterplan were implemented. The city infilled the expressway and constructed a new surface street with adjacent tree lined cycle track fronting our proposed hotel, mixed-use and residential parcels.

For the first implementation phase we constructed the parking structure, while providing temporary parking for the museum on the vacant expressway infill parcels. Upon completion of the parking structure, we constructed the final phases, including museum expansion, market rate and affordable housing, mixed-use commercial, hotel, streets, and privately owned public spaces.

The entire neighborhood was completed in the summer of 2023.



### Jury Comments

It's a compelling presentation with good diagrams - the section diagrams especially were helpful. The project is thoughtful and layered. They honored existing conditions. The pedestrian spaces are interesting in their separation but gestural moves weave it together.

# Citation Award



## Lincoln Library Edge Architecture

### Owner

City of Rochester

### MEP Engineer

MH Professional Engineering

### Structural Engineer

Ravi Engineering & Land Surveying

### Landscape Architect

RPK Landscape Architecture

### Photography

Tim Wilkes

### Project Description

The project encompassed a renovation for the city's largest and most cherished library branch, situated in a high-need residential neighborhood characterized by a significant youth and transient population. The building, essential to the community, required repairs, and its interior layout posed challenges in meeting the diverse needs of the residents.

A full gut renovation was completed, transforming the branch library to better serve the community. Key considerations in the redesign encompassed:

- Enhanced building layout and programmatic uses.
- Dedicated spaces tailored for children, teens, and adults, featuring acoustical separation and small meeting areas within each section.
- Improved adjacencies, particularly between the children's area and toy library.
- Introduction of a new family restroom adjacent to the children's area.
- Strategic relocation of the circulation desk to enhance sight lines, traffic flow, and security.
- A neighborhood support center with visible access from the circulation desk, equipped with computer and printer facilities.
- Provision of a separate staff lounge for increased comfort and privacy.
- Overall improvement of the interior environment, including the installation of new windows for natural light, vibrant paint to brighten up spaces, and energy-efficient lighting.
- Redesigned entry and storefront to create a more inviting atmosphere and foster a stronger connection to the neighborhood.
- Celebration of community pride through the incorporation of original community artwork and a new outdoor mural.

This transformation not only addressed the structural and functional shortcomings but also accentuated the library's role as a community hub, fostering a welcoming and inclusive environment for all.



### Jury Comments

The before and after images are dramatic, definitely an improvement. The front elevation is the money shot - the welcoming patio and light from inside is most compelling. The project is commendable and impactful.

# Community Impact Award



## 24 Jones - Avenue Housing for Alcohol & Substance Use Rehabilitation

### Plan Architectural Studio, PC

#### Owner

Catholic Charities Family and Community Services

#### Photographer

Tim Wilkes

#### Project Impact Summary

In the established Jones Square Park neighborhood just north of Rochester's Center City, an existing circa 1907 Colonial Revival house has been rehabilitated as a residence to serve adult males recovering from Alcohol and Substance Use Disorders. Period details were carefully preserved such as the exterior Palladian-style dormer windows, front porch, dentilled cornice, interior natural oak trim, crown mouldings, paneling, stair and railings. Emphasis was placed on providing a calming, natural color palate and a therapeutic environment to contribute to the residents' recovery. To provide accessibility to the entire residence, a modest addition takes cues from a home that once stood on that portion of the site, with a simple gable roof, horizontal lap siding, and punched double hung windows. A transparent glazed entrance lobby and new electric traction elevator were added, strategically separated from the original house with a recessed connector link. The program includes single, double, and triple-occupancy sleeping rooms, common bathrooms, lounges, recreation, and dining space with a large kitchen. On-site support includes counseling offices and nursing staff. Circulation was simplified by tying the front entrance to the new addition with a central corridor, providing straightforward organization and views through the building. The entire residence was outfitted with new insulation, energy-efficient windows, air sealing throughout, and electric VRF (Variable Refrigerant Flow) units with individual controls. The location of the residence allows its occupants to walk to essential services, and beautiful Jones Square Park, with its large shade trees, grand lawn and walk paths just a block away. By rehabilitating the house and adding onto it, rather than demolition and new construction, the Owner and funding agency (OASAS) placed a high priority on preservation and urban design. The residence was rehabilitated with a very modest budget. This was accomplished by saving, rather than removing the original building, while preserving the important period details, and providing sleeping rooms that can group multiple residents when needed. It was a gem that needed attention and polishing, and it now serves as an example for other homes in the neighborhood.

# Scholarship Winners



#### Jack Christie

SUNY Alfred State College  
 "I am deeply honored to receive both the Myron Starks Memorial Scholarship and the AIA Rochester Scholarship. Serving as the AIAS Alfred State President this past year, I have felt truly embraced by AIA Rochester and the broader Rochester architecture community, which has been instrumental in honing my skills and leadership as an emerging professional. These scholarships will significantly support my final year in Alfred State's B.Arch program, further empowering me to enhance the built environment and positively impact our community."

Myron Starks Scholarship \$2,000  
 AIA Scholarship \$3,000



#### Pallas Hoffmann

Syracuse University  
 "The 2024 AIA Rochester Scholarship, in addition with the Women in Architecture Scholarship, will help play a large role in financing my academic career in architecture at Syracuse University. It is an honor to receive this scholarship from my hometown, and I am proud to represent Rochester within the field of architecture."

Women in Architecture Scholarship \$2,000  
 AIA Scholarship \$3,000



#### Savannah Swinter

SUNY University at Buffalo  
 "This scholarship allows me to further my education, an opportunity I otherwise might not have had. I've enjoyed my freshman year and can't wait to dive deeper into this profession."

AIA Scholarship \$2,500



#### Ambrose Weidmann

McQuaid High School Senior  
 University of Notre Dame  
 "I'm honored to be recognized by a professional organization in the field of Architecture, one that I've been interested in since first grade. This scholarship will help take the pressure off of me during college, allowing me to spend more time pursuing my passion."

AIA Rochester Scholarship \$5,000



#### Lillian Brady

Honeoye Falls-Lima HS Senior  
 Rensselaer Polytechnic Institute  
 "This scholarship will provide me with opportunities in my pursuit of a Bachelor of Architecture degree. Thank you AIA Rochester for helping to further my potential."

AIA Scholarship \$2,500

Each year, AIA Rochester awards merit-based scholarships to high school and college students from the Greater Rochester community who are pursuing careers in architecture. These scholarships are given in conjunction with AIA National and the [Rochester Architecture Foundation](https://www.aia-rochester.org), which administers two scholarships: one from the Family of Myron Starks and one from Women in Architecture. Five students were awarded scholarships totaling \$20,000 this year. For more information visit [aiaroc.org/scholarships](https://aiaroc.org/scholarships).

Scholarship winners and their guests attended the Design Awards Celebration courtesy of the Rochester Architecture Foundation.



# Awards Jury

Colleagues on the Board of Directors at AIA Cincinnati comprised the 2024 Design Awards Jury. AIA Rochester is grateful for the great care, effort, and time that they put into our awards selection.



## **Jury Chair Kurt Platte, AIA, NCARB**

Kurt Platte is Principal and founder of Platte Architecture + Design, and licensed in Ohio, Kentucky, Indiana, and West Virginia. He received a Bachelor of Architecture from North Carolina State University, and a Bachelor of Environmental Design from Miami University. Kurt has spent the past 40 years mastering the creation of built environments. His work covers a wide range of project types and sizes including single and multi-family housing, worship, retail, restaurants, bars, distilleries, and mixed-use design with a concentration of work in the Over-the-Rhine historic district of Cincinnati. Since the firm's inception in 2002 it has grown into a multi-disciplinary studio of Architects and Interior Design professionals. The firm has been recognized for design excellence with numerous design awards and articles.



## **Cori Cassidy, AIA**

Cori Cassidy is the President of Architecture 359, an architecture studio with offices in Over-the-Rhine, Cincinnati and Rabat, Morocco. A359 has a focus on adaptive reuse and transformative renovations with projects including the I819 Innovation Hub at the University of Cincinnati, Shawnee State University Kricker Innovation Hub, and Imperial Theatre Mohawk. The studio is currently working on multi-scaled projects for the US Embassy in Morocco and has engaged in national competitions, earning a commission in Poti, Georgia and placing second in the Cite des Arts Marrakech Competition. Cori enjoys the collaborative work of programming and designing with a diverse range of clients from small scaled non-profit entities to global corporations. She served for multiple years on the board of AIA Cincinnati, including a term as AIA Cincinnati President, and is an active volunteer in her community.



## **Allison McKenzie, AIA**

Allison McKenzie is a Vice President and Director of Environmental Responsibility at Cincinnati, Ohio based architecture and engineering firm SHP. In addition to design work on education and community projects, she oversees the firm's sustainability and advocacy initiatives. Allison focuses on projects that will make a difference in the everyday lives of those in her community and region, living SHP's motto of Simply Helping People. In 2023, her Winton Woods School District Campus projects won the international James D. MacConnell Award for the planning and design of educational environments. Allison is a past president of AIA Cincinnati and currently serves on the AIA Ohio board. Additionally, she is the current Chair of the City of Cincinnati's Historic Conservation Board.



## **Andrew Plogsted, AIA, NCARB, LEED AP BD+C**

Andy brings 23 years of professional experience in the design and construction industry. Known for his attention to detail as a project architect, his portfolio is multi-faceted, including pk-12 educational spaces, higher education, healthcare, multi-family, and various civic work. He is experienced in large scale, multi-million-dollar projects – both renovations and new construction. From the start of his career, Andy has been heavily involved with the U.S. Green Building Council and served for ten years in various USGBC Ohio Board of Directors positions. He has spoken at many regional conferences about the value of the triple bottom line [environment + economics + social equity] and continually drives for environmentally smart solutions through his work at Emersion Design.



## **Laila Ammar, AIA**

Laila Ammar is currently an Associate Project Architect with MSA Design where she leads teams on complex and large scale civic and education projects, often adaptive reuse or renovation. No matter the project type she prioritizes design thinking in her project approach. She has been faculty at University of Cincinnati's School of Architecture and Interior Design (DAAP), facilitating undergraduate architecture design studios and is a recurring guest critic for various studio and thesis reviews at UC and other regional architecture programs. After completing AIA Cincinnati's VISION Leadership program, she has continued participation as a moderator for the program's panel discussions that bring national experts in dialogue with local experts on topics ranging from design excellence to advocacy within architecture. She is currently Vice President of the board of her neighborhood non-profit community development corporation, NEST (Northsiders Engaged in Sustainable Transformation), whose work centers around affordable housing and building upon their vibrant neighborhood with community focused development, public art, and pedestrian safety projects in their business district. Ammar is also an improv and sketch comedian. She sees the crossover between creating characters on stage and creating the architectural characters (buildings), who, when well formed, take on postures, moods, and express themselves so clearly you can anticipate their potential.



## **Robert Busch, FAIA, LEED AP**

Robert Busch is the founding partner of Drawing Dept, an architecture and design firm in Cincinnati, Ohio committed to client-centric, collaborative design solutions. Since its founding in 2005, Drawing Dept has won over 100 design awards for a wide variety of project types with a concentration in hospitality and single-family residential. Rob's career has been built on the conviction that design has the responsibility to challenge, evoke, and enlighten. Rob's work is simultaneously bold, yet quiet and approachable. Highly distilled, it is defined by its legibility and crafted detailing. Unlike overtly formal solutions, Rob's work reveals itself by unburdening and disinhibiting the user. It is willingly recessive, but rewards attention. Rob currently serves as secretary for AIA Cincinnati after serving as a director. He is a frequent critic at the School of Architecture and Interior Design at the University of Cincinnati, where he has also worked as an adjunct professor. He is also a marathoner and breakfast cereal enthusiast – oh, and father of four.

# Director of Practice + Design



## **Adam Badura, Associate AIA**

As a fresh face in the architectural profession and community, Adam recently had the opportunity to contribute as the chairman for this year's Design Awards. Before attending Alfred State for a BArch degree, he had been working as a metal fabricator, a craft that honed his attention to detail and appreciation for materials. However, the allure of intellectual challenges led him to pivot towards architecture, one that was rewarded with personal growth and recognition in competitions like the HOME competition in 2020 and Designers Unleashed in 2023. These experiences were not about the accolades but about pushing his boundaries and expanding his capabilities. College studies in architecture led to an unexpected discovery: a passion for connecting with others. As Adam continues to build his career at HUNT EAS, he seeks to be genuine and approachable, hoping to inspire others not by accolades, but by the earnestness and kindness in his work.

Thanks to Adam's leadership, we hosted a sold-out 2024 Design Awards Gala at The Historic German House. The chapter acknowledges the work of the entire Design Awards Committee: Daniel Hsu, Emily Steinbacher, Heidi Valdez, David Matthews, Sara DeSalvo, Danielle Rupert, Nicole Martin, Christina Fluman and Michelle Murnane. Additional thanks goes to Reuben Morgan at Alfred State, Samantha Towner at Dwyer, and emcee 2024 AIA Rochester President Jamie Bucci, AIA.

AIA Rochester especially thanks our sponsors for their enthusiastic participation in our Design Awards. Without their ongoing commitment, this event would not have been possible. Visit [www.aiaroc.org/design-awards](http://www.aiaroc.org/design-awards) to see additional information about our award winning projects.

# 2024 Design Awards Sponsors

## Large Table Sponsors



## Half Table Sponsor



## Presentation Sponsors



### Bar Sponsors



### Hors D'oeuvres Sponsor



### Napkin Sponsor



### Signature Drink Sponsor



### Cocktail Slide Sponsors



Visit [www.aiaroc.org/design-awards](http://www.aiaroc.org/design-awards) to see additional information about our award winning projects.